

\$5



“One of the top 10 things to do in Tallahassee.”
 - Tallahassee Magazine

“When ... researching the history of the American soda fountain ... all roads led to Gregory Cohen [owner of Lofty Pursuits], probably the country’s leading expert on the institution.”
 - New York Times





DAIRY SODAS

Dairy sodas are made with either milk or cream. Lactose intolerant and vegan folks don't worry, we can make any of these using almond milk and they are just as good.

Egg Creams

If there's no egg or cream in it, why is it called an egg cream? The original name was the French "Chocolat et Crème," which, when said with a Brooklyn accent became a Chocolate Egg Cream. This is our signature drink and our favorite. It is made from milk, seltzer and our own handmade chocolate syrup.

This drink has been made in Brooklyn for over 100 years, since it was invented by Louis Asture in his candy store on 4th Avenue and 7th Street in Manhattan.

Since this delicious mixture loses its fizz

in a short time, egg creams are one of the soda fountain specialties you can't get without going to a true soda fountain.

Lofty Pursuits is one of the few places to get this Brooklyn original outside the New York area.

BROOKLYN EGG CREAM A chocolate & milk soda **VNG** 3.85

BRONX EGG CREAM Same as the Brooklyn Egg Cream, but with a pretzel stick. **VN** 3.85

VANILLA EGG CREAM Same as the Brooklyn Egg Cream, but with vanilla syrup instead of chocolate. **VNG** 3.85

MANHATTAN EGG CREAM Half vanilla syrup and half our own chocolate syrup. **VNG** 3.85

SAN FRANCISCO EGG CREAM Chocolate syrup and hazelnut syrup. **VG** 3.85

French Sodas

These are sodas made with fruit syrup as well as cream. Mixed together these make the drinks smooth and wonderful. It is an ice cream soda, but without the ice cream.

Suggestions: Peach, Coffee, Blueberry, Hazelnut **VNG** 3.85

SODAS ON TAP

Our sodas are unlike anything you have had elsewhere. We use them in our floats, but they are just as good alone.

SPRECHER ROOT BEER Rated #1 by the NY Times. Great aroma, great flavor and sweetened with honey. Perfect for a float or by itself. **G** 3.30

SPRECHER ORANGE DREAM An orange cream soda with crisp real orange taste. Also used in our Florida Cow. **VG** 3.30

TWO BIT PLAIN A glass of our seltzer water over ice. A nice refreshing sugar, salt, and everything else free drink. **VNG** .25



HANDMADE SODAS

A master of the soda fountain is called a Fizzician. A Fizzician is a special type of Soda Jerk with expertise in mixing flavors and textures of sodas. In many ways a Fizzician is very much like a bartender mixing his specialties. There are three standard sodas that we make. Not all flavors work with all of these mixtures, but our Jerks and Fizzicians can help you choose. If you can't choose, try a suicide, which is up to six flavors mixed as a single drink.



Classic Fizzy Soda

This is a syrup mixed with seltzer served under ice. These include all of our other syrups. Ask about our current flavor list.

Suggestions: Cherry, RC Cola, Vanilla, Peach **VNG** 3.30

Phosphate

A phosphate is an acid fruit drink, where the acid comes from a dash of phosphoric acid, the same acid that gives the bite in Coca-Cola. Cherry Phosphates are traditional, but any fruit syrup combination will work well. Served under ice in a bell glass. Available with a sugar-free sweetener upon request.

Suggestions: Cherry, Raspberry, Peach+Strawberry, Vanilla+Cherry **VNG** 3.85

Rickeys

Acid brings out the flavors of fruit. In a rickey the acid comes from the juice of half a lime. We make the traditional raspberry, strawberry and cherry rickeys, but we can also make other flavors on request (a pineapple peach rickey is just great!). Served under ice in a bell glass. Available with a sugar-free sweetener upon request.

Suggestions: Raspberry, Cherry, Strawberry, Peach **VNG** 3.85

Add a scoop of Sherbet or Sorbet to make this a Fizz. **VG** 7.00

Ades

Traditional lemonade and limeade are not enough. We make carbonated versions of these drinks, so they become citrus sodas. Let us add a squirt of cherry syrup to make it special, or blueberry to make it our house special: "The Fritz." You can even do half a lemon and half a lime for a real lemon-lime soda. Available with a sugar-free sweetener upon request.

Carbonated Lemon Ade, Lime Ade or Lemon-Lime Ade **VNG** 3.85

Carbonated Blueberry Lemonade ("The Fritz") **VG** 3.85

Add a scoop of Sherbet or Sorbet to make this a Fizz **VG** 6.85

Drink Definitions

SODAS ON TAP Our root beer is shipped from the brewery to us in kegs. They are treated like kegs of traditional beer, which is an appropriate way to ship root beer. Best of all, they taste better this way.

HANDMADE SODAS A handmade soda is made with flavored syrups and seltzer water from our vintage soda heads. The "jerking" motion that is needed to use this equipment is what gave soda jerks their name.

FRENCH SODAS Like the handmade soda, but with a touch of cream mixed in. An ice cream soda without the ice cream.

EGG CREAMS Contains neither egg nor cream. It's a traditional Brooklyn soda based on a French soda. It is mixed a little differently, the syrups are in different proportions, and it uses milk instead of cream.

PHOSPHATES A handmade soda with a little phosphoric acid added for a bite. This is the same stuff that gives Coca-Cola its tang.

ADES A handmade lemon or lime soda made with fresh fruit. These are amazing when made into a carbonated soda.

RICKEYS A handmade fruit soda with lime juice to give it a little bite.

FLOATS A scoop of ice cream floated on top of a glass of soda.

FIZZS A scoop of sherbet or sorbet floated on top of a glass of carbonated lemonade or limeade. Our "Green River" is a Fizz.

ICE CREAM SODAS A scoop of ice cream floated on top of a French soda.

FREEZE A fizz that has been blended on our shake machine.

YIP aka a "Double Awful" An ice cream soda that has been blended on our shake machine.

SHAKES Ice cream, syrup and milk blended to a thick and smooth consistency on our mixing machine.

MALT An ice cream shake blended with malt powder for more flavor.

AFFOGATO A hot but cold drink made with a shot of espresso poured over a scoop of ice cream, usually vanilla ice cream.



ICE CREAM SODAS

Ice cream sodas are the masterpiece of a soda fountain. Sadly, they are almost a lost art due to the lack of the specialized equipment needed to make them. Our Bastian-Blessing seltzer heads were made in about 1961 and are the key to this great treat. We hand mix cream with flavored syrups, and then add the soda water and float a scoop of ice cream on top. The heavenly bubbles created by the long proteins of the cream support the ice cream in these sodas. These bubbles are what make an ice cream soda an ice cream soda. It is very hard to make consistently, and is one of the specialties we are most proud about here at Lofty Pursuits. We can make these with any flavored syrup and any ice cream.

BLACK AND WHITE Chocolate soda with vanilla ice cream **VNG** 6.00

STRAWBERRY Strawberry soda with strawberry ice cream **VG** 6.00

VANILLA Vanilla soda with vanilla ice cream **VNG** 6.00

CHERRY BOMB Cherry soda with chocolate ice cream **VG** 6.00

CHOCOLATE STOUT Chocolate soda with Guinness ice cream 6.00

GINGER BLITZ Ginger soda with Vanilla ice cream **G** 6.00

COFFEE Coffee soda with our coffee ice cream. **G** 6.00



FLOATS

A float is a glass of traditional soda (Root Beer, Cola or Orange Dream) with a scoop of ice cream floating on top. Served in a bell glass.

BROWN COW Sprecher Root Beer with a scoop of vanilla ice cream. **G** 6.00

FLORIDA COW Like a liquid popsicle, our Sprecher Orange Dream soda with a scoop of vanilla ice cream floating on top. **VG** 6.00

BLACK COW Our hand mixed RC Cola with a scoop of vanilla ice cream. We can also make this with a Mexican Coke upon request. **VNG** 6.00

PEPPERED COW Doctor Pepper with a scoop of vanilla ice cream. **VNG** 6.00

THE GREEN RIVER

is a handmade Fizz. We float a scoop of lime sherbet over a handmade lemon soda. We juice the lemon fresh. Refreshing in the heat or any time. **G** 7.25



THE LOFTY PURSUITS MARCHING BAND

Lofty Pursuits sponsors a community marching band. We march (or rather walk) in various local parades and events. This is an all-ages group that is here to have fun and to make music. If you are interested in joining, please contact us through our web site.





SHAKES

Our shakes are made with fresh milk from Sparkmans. This local milk, while pasteurized, is not homogenized. This leaves longer milk proteins that hold the air whipped into our shakes better for a lighter, fluffier shake. Then we top it with our whipped cream and a cherry.

Depending on the flavors, we either make our shakes with matching flavored ice creams, as we do for the chocolate, strawberry and vanilla shakes, or we use sweet cream ice cream as a base, to let the subtle flavors of the syrups shine through. We can even make sugar-free shakes and vegan ones using our NSA ice cream, or our vegan ice cream with almond milk.

Suggested: Vanilla, Chocolate, Strawberry, Pineapple, Blackberry, Peach, Raspberry, Cherry, Blueberry, Hazelnut, Orange Marmalade, Blueberry, Peanut Butter. **VGN** 7.50

MALTS

Malts are ice cream milk shakes with the addition of malt powder. Malt powder intensifies and smooths the flavors of a milk shake at the same time. Most modern malts leave a grit to the drink, but we have found an old type of malt powder that leaves our malts silky smooth. Come up with any flavor idea and we can make it.

Vanilla, Chocolate, Strawberry, Pineapple, Cherry, Blueberry 7.90

Featured Shakes and Malts

TOASTED MARSHMALLOW Toasted marshmallow milk shake, topped with vanilla whipped cream and a freshly toasted marshmallow. **VG** 8.00

CHOCOLATE ORANGE MARMALADE Chocolate shake mixed with marmalade syrup for an amazing combination. **VG** 7.50

GINGER A spicy ginger milk shake topped with vanilla whipped cream and a cherry. **VG** 7.50

THE DOCTOR ROCK'N HOCKIN Malt milkshake made of chocolate ice cream, malt and coffee syrup. 8.50

MAYAN CHOCOLATE Sweet and spicy chocolates are combined for a sweet flavor on the way in with just a touch of fire on the way down. **VG** 7.50

APPLE PIE MILK SHAKE Apple syrup and cinnamon ice cream topped with vanilla whipped cream. An Uri Original. **VG** 7.50

CHOCOLATE COVERED STRAWBERRY Chocolate and strawberry ice cream blended with chocolate and strawberry syrup with whipped cream and a cherry. **VG** 7.50

FREEZES AND YIPS

(aka Double Awfuls) Freezes and Yips are blended seltzer drinks. Unlike shakes and malts that use milk as the blending liquid, these drinks use seltzer water. The seltzer causes the sorbet or ice cream to become more of a slush rather than a smooth drink like a shake. This consistency change makes these drinks very refreshing. Freezes are made with syrup, sorbet and seltzer, and by their very nature are vegan. Yips can be made from any syrup and any ice cream (instead of sorbet).

RASBERRY FREEZE Lemon sorbet blended with raspberry syrup. **VG** 7.50

GINGER YIP Sweet cream ice cream blended with ginger soda. **VG** 7.50

CHAMPAGNE BLUEBERRY FREEZE Champagne sorbet blended with blueberry syrup. **VG** 7.50

FRENCH POODLE Grapefruit and Champagne Sorbet blended with seltzer water **VG** 7.5

COFFEE MILK

Coffee Milk is the state drink of Rhode Island. It is essentially chocolate milk made with coffee syrup instead of chocolate. We use our house made syrup and O'cheesee milk for this drink. 3.00

HOT DRINKS

AMERICANO We brew every cup of our coffee fresh for the perfect taste. 100% Fair Trade and Organic. Available in a dark, medium or decaffeinated blend. **VNG** 2.50

DRIP COFFEE A more basic blend of coffee

Cup **VNG** 1.25
Unlimited refills **VNG** 2.00

HOT CHOCOLATE We make hot chocolate with our hand made chocolate syrup, frothed hot milk and love. Simply the best. **VNG** 4.50

SALTED CARMEL HOT CHOCOLATE We line the cup with our butter caramel, and then we add our ganache, frothed hot milk and a pinch of sea salt. Simply the best **G** 5.50

AFFOGATO A shot of espresso over a scoop of ice cream, traditionally vanilla ice cream. Affogato means "drowned" in Italian. **VNG** 4.50



GIVE THE GIFT OF LOFTY PURSUITS

GIFT CARDS FOR ANY AMOUNT!

At Lofty Pursuits we have lots of great gifts, but sometimes it's hard to know what to give. For you we have our gift cards that we can issue in any amount. They are good for anything at Lofty Pursuits from toys to candy to ice cream. Give people a gift that will bring smiles, since Lofty Pursuits gift cards are always redeemable for fun.



THE LOGIC OF THE SODA FOUNTAIN

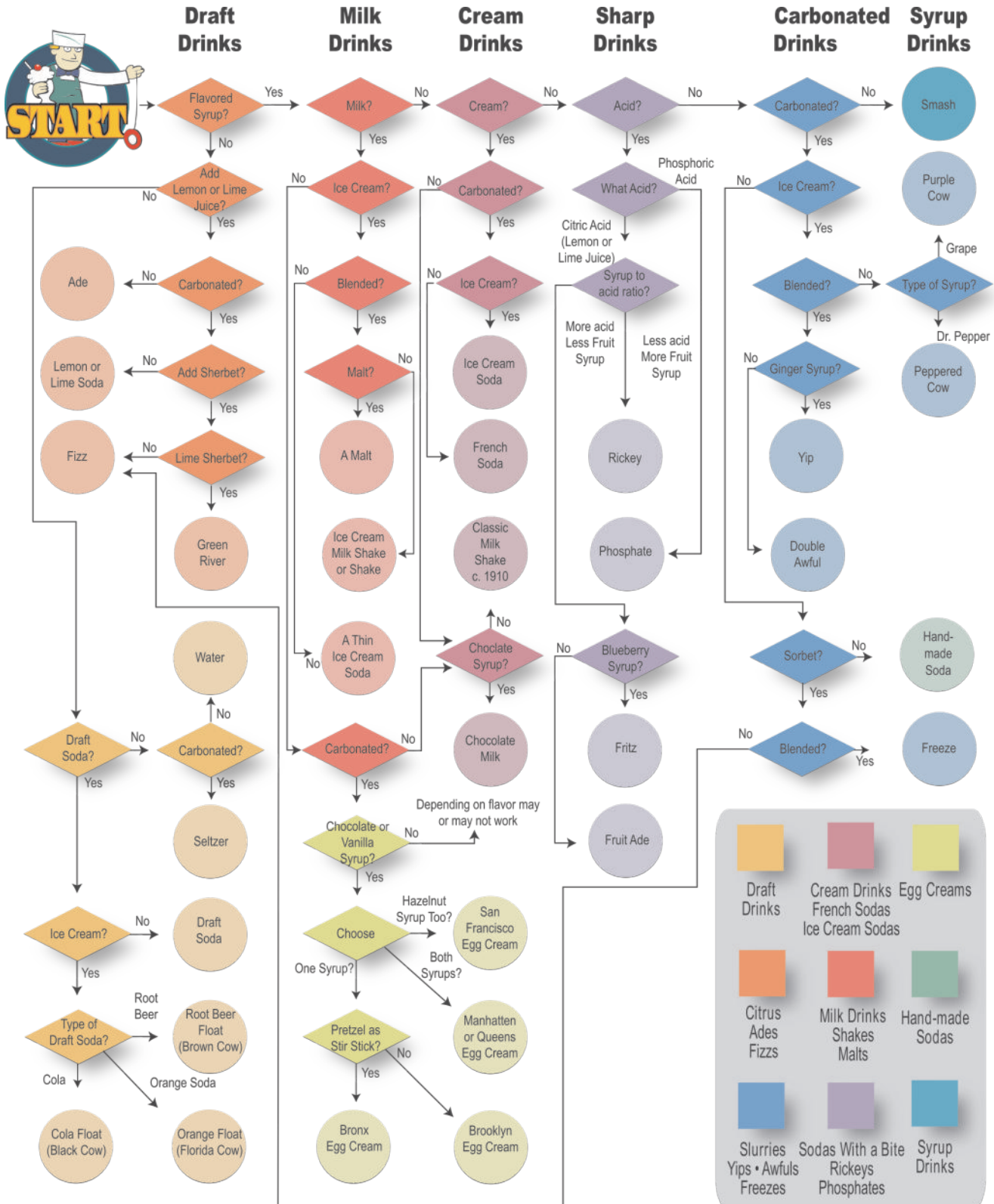
Drinks from the Soda Fountain are all interconnected. Depending on if you have a fizzy drink, there is ice cream or sorbet in it, or if there is milk, the whole thing changes. As crazy as it seems, there is some logic to it, and of course there are names for everything. At Lofty Pursuits we encourage experimentation, so we've put together this chart to show you what is possible for us to do. There are thousands of combinations, this is what makes Lofty Pursuits unique.

SYRUPS

Vanilla, Hazelnut, Blueberry, Cherry, Strawberry, Raspberry, Banana, Blackberry, Ginger, Spicy Chocolate, Pineapple, Toasted Marshmallow, Peach

SUGAR-FREE SYRUPS

Peach, Vanilla, Strawberry, Raspberry, Chocolate



Draft Drinks	Cream Drinks	Egg Creams
Citrus Ades Fizzes	Milk Drinks Shakes Malts	Hand-made Sodas
Slurries Yips • Awfuls Freezes	Sodas With a Bite Rickeys Phosphates	Syrup Drinks

SUNDAES

1. **HOT GANACHE** Vanilla ice cream with hot ganache, vanilla whipped cream and a cherry. **VNG** 5.00 • 7.70
2. **DUSTED** Chocolate ice cream with hot ganache, dusted with malt powder & chocolate whipped cream. **N** 5.00 • 7.70
3. **TIN ROOF** Hot ganache, vanilla ice cream & a roof of peanuts. **VNG** 5.00 • 7.70
4. **TWO TONE** Scoops of chocolate and vanilla ice cream, marshmallow, nuts, hot ganache and chocolate whipped cream, and a cherry. **VNG** 5.00 • 7.70
5. **CHOCOLATE ATROCITY** Chocolate ice cream with hot ganache, crushed chocolate cookies, and chocolate whipped cream. **V** 5.50 • 7.70
6. **UP ALL NIGHT** Coffee ice cream and coffee syrup with chocolate whipped cream and chocolate covered espresso beans. **G** 5.50 • 7.70
7. **BADA-BING** Cherry Chocolate Chunk ice cream, hot ganache and whipped cream. **VG** 5.50 • 7.70
8. **PINEAPPLE** Vanilla ice cream, pineapple topping and vanilla whipped cream. **VG** 5.50 • 7.70
9. **RASPBERRY** Vanilla ice cream, raspberry topping and vanilla whipped cream. **VG** 5.50 • 7.70
10. **BLOWING RASPBERRIES** Chocolate ice cream, raspberry topping and chocolate whipped cream. **VG** 5.50 • 7.70
11. **STRAWBERRY ALL THE WAY!** Strawberry ice cream, strawberry topping, covered in our strawberry whipped cream and a cherry on top. **VG** 5.50 • 7.70

12. **OH SNAP, GINGER GOODNESS** Sweet cream ice cream topped with chopped candied ginger, ginger syrup and whipped cream **VG** 5.50 • 7.70

13. **BUTTER CARAMEL DELIGHT** Chocolate and vanilla ice cream with hot butter caramel and vanilla whipped cream. **G** 5.50 • 7.70

14. **NORTHERN EXPOSURE** Vanilla ice cream with wet walnuts (walnuts in maple syrup), whipped cream and walnuts. **VG** 5.50 • 7.70

15. **BLUEBERR**



WHAT IS GANACHE?

BETTER THAN HOT FUDGE
MADE FROM BELGIAN
CHOCOLATE & CREAM



52 SUNDAES ON THE MENU!
One for ever Sundae of the year.
Have a different one every week.

Y HILL Vanilla ice cream, blueberry topping and whipped cream. **VG** 5.50 • 7.70

16. **MELLOW MARSHMALLOW** Chocolate ice cream covered with marshmallow and chocolate whipped cream with chocolate sprinkles. **G** 5.50 • 7.70
17. **MOCHA EVENING** Coffee and chocolate ice cream covered with ganache, butter caramel and whipped cream with chocolate sprinkles. **G** 5.50 • 7.70
18. **GOOD FOR YOU SUNDAE** Scoops of Guinness ice cream, ganache, cookie crunch and chocolate whipped cream. 5.50 • 7.70
19. **TOFFEE AND TURVEY** Toffee ice cream, butter caramel, crushed heath bars, vanilla whipped cream. **G** 5.50 • 7.70
20. **AFTERNOON DELIGHT** Strawberry and chocolate ice cream with ganache and strawberry topping, chocolate whipped cream and a cherry. **VG** 5.50 • 7.70
21. **DEEP DARK ORANGE** Chocolate ice cream, Orange Marmalade syrup & chocolate whipped cream. **VG** 5.50 • 7.70
22. **DIESEL SUNDAE** Guinness ice cream covered in coffee syrup and chocolate whipped cream. **V** 5.50 • 7.70
23. **KISS OF THE DEVIL** Chocolate ice cream with ganache topped with chipotle pecans and chocolate whipped cream. Sweet burning love. **G** 5.50 • 7.70
24. **SUWANEE SUNDAE** Butter pecan ice cream covered with butter caramel sauce, honey roasted pecans and whipped cream. **G** 5.50 • 7.70
25. **TOUCHED BY AN ANGEL** Vanilla ice cream with marshmallow topping, chipotle pecans and whipped cream. **G** 5.50 • 7.70
26. **PEACH MELBA** Vanilla ice cream with peach and raspberry topping and whipped cream. **VG** 5.50 • 7.70
27. **CHOCOLATE PEANUT BUTTER** Chocolate ice cream with peanut butter, ganache and chocolate whipped cream. **VG** 5.50 • 7.70
28. **BELLINI SUNDAE** Champagne sorbet and peach syrup, almonds, whipped cream. **VG** 5.50 • 7.70
29. **BLUE AND TART** Lemon sorbet with blueberry topping and whipped cream. **VG** 5.50 • 7.70
30. **CARDINAL CIN** Cinnamon ice cream, marshmallow sauce toasted coconut, vanilla whipped cream. **VG** 5.50 • 7.70
31. **SANDY SUNDAE** Sweet cream ice cream covered with our hot butter caramel, crushed short bread cookies and a pinch of salt, whipped cream and a cherry. 5.50 • 7.70
32. **GRANDMA'S APPLE PIE SUNDAE** Cinnamon ice cream, crush short bread cookies, apple syrup, butter caramel, a pinch of salt, whipped cream and a cherry. 5.50 • 7.70
33. **S'MORE SUNDAE** Chocolate ice cream with marshmallow and ganache, crushed graham crackers, whipped cream and a toasted marshmallow. **V** 5.50 • 7.70
34. **OLD COUNTRY STORE** Vanilla ice cream, covered with RC Cola syrup, a handfull of peanuts, whipped cream and a cherry. **VG** 5.50 • 7.70

V - Can be adapted to vegan • **N** - Can be adapted to no sugar added • **G** - Gluten Free

Twins

Served in 1940's vintage twin sundae dishes.

35. GUILTY CONSCIENCE

Strawberry ice cream with chocolate ganache and chocolate ice cream with strawberry topping, whipped cream and marshmallow sauce. **VG** 8.50

36. YIN-YANG Vanilla ice cream with chocolate ganache, vanilla whipped cream and chocolate sprinkles next to a scoop of chocolate ice cream with marshmallow topping, chocolate whipped cream and white sprinkles with a cherry in the middle. **G** 8.50

37. DOUBLE FEATURE Vanilla ice cream with peanut butter topping and ganache next to a scoop of deep dark chocolate with marshmallow and peanut butter topping. Like a peanut butter cup and a mallow cup. **VG** 8.50



Banana Creations

(Splits, Royales, Skyscrapers and Merry-Go-Rounds)

38. BANANA SPLIT On a fresh-cut banana, vanilla, chocolate and strawberry ice cream with chocolate, pineapple and strawberry toppings and chocolate, vanilla and strawberry whipped cream sailing to you in our banana boat. **VG** 13.00

39. CHOCOLATE BANANA SPLIT On a fresh-cut banana, three scoops of chocolate ice cream, topped with marshmallow, ganache and our butter caramel sauce, then topped with whipped cream and chocolate sprinkles, chocolate chips and chocolate cookie crunch. 13.00

40. NUTTY SPLIT On a fresh-cut banana, 3 scoops of your choice of nut flavored ice creams, topped with wet walnut topping and vanilla whipped cream, peanuts, almonds and walnuts. **G** 13.00

41. PANTS HAVE SPLIT A double banana split. Twice as much of everything from ice cream to bananas. **VG** 21.00

42. BANANA ROYALE Vanilla ice cream, banana slices, topped with whipped cream, sliced almonds and ganache in a royale dish. **VNG** 8.50

43. GOLD-DIGGER (Royale) Butter pecan ice cream, hot butter caramel, bananas slices and whipped cream in a royale dish. **G** 8.50

44. THE KING IS ALIVE! (Royale) Vanilla Ice cream. We slather on our peanut butter topping, marshmallow, slices of banana and chocolate whipped cream. **VG** 8.50

45. MERRY-GO-ROUND Two scoops of vanilla ice cream covered with hot butter caramel and ganache served in a royale dish with slices of bananas stacked up against the ice cream with a cherry between every slice. **G** 9.00

46. SKYSCRAPER In a standard sundae glass, a banana is cut into four pieces, then the dish is filled with vanilla and chocolate ice cream, butter caramel sauce, vanilla whipped cream and a cherry. **G** 8.50

47. PEG O' MY HEART (Skyscraper) Vanilla ice cream, chocolate ganache and marshmallow topping with slices of bananas arranged vertically around the glass, topped with whipped cream and nuts. **VG** 8.50



SPECTACULARS

Ask about availability.

48. SUSHI SUNDAE Cherry chocolate chunk ice cream and lime sherbert, wrapped in vanilla ice cream and white sprinkles, served in slices with dipping chocolate, candied ginger and chopsticks. 13.50



49. POUND CAKE SUNDAE Toasted pound cake covered with our hot butter caramel sauce, two scoops of vanilla ice cream also covered with the sauce, topped with vanilla whipped cream and a cherry. Inspired by the legendary sundae from Schrafft's of New York City. 13.00



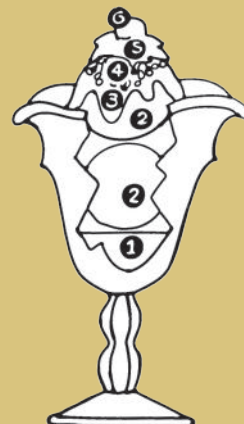
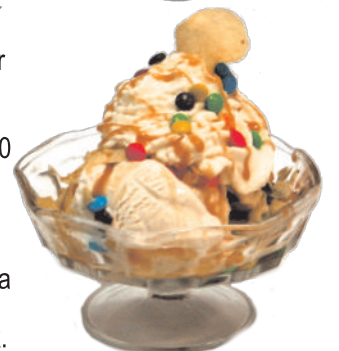
50. DEEP DARK CHOCOLATE BROWNIE DREAMS A hot chocolate laden brownie, covered in ganache, topped with our deep dark chocolate ice cream, more ganache, and chocolate whipped cream with chocolate chips and a cherry. 13.00



51. LATE NIGHT SNACK SUNDAE aka the Potato Chip Sundae. Vanilla ice cream drenched in our hot butter caramel sauce, M&M's and crushed potato chips. **G** 12.00



52. THE SUNDAE OF BROKEN DREAMS Our homage to the Brooklyn Pharmacy, a soda fountain in Brooklyn, New York. A sundae of vanilla ice cream, covered in butter caramel sauce and crushed pretzel sticks. Salt and sweet and crunch 12.00



Create your own Sundae

Pick up to two flavors of ice cream, any dry topping, any syrup or sauce, whipped cream and a cherry. You can always upgrade this or any sundae with other toppings. Ask for details or suggestions. You are only limited by your imagination.



SPECIALTIES

Ask about availability.

THE KITCHEN SINK 26 scoops (over 1 gallon) of ice cream in a stainless steel sink with every topping we have. So it's everything AND the kitchen sink. If one person eats it in 2 hours they get on our Wall of Fame. Enough for 1 to 14 people. For groups we serve this with a serving spoon and multiple bowls. **G 69.00**



ICE CREAM SANDWICHES

We start by baking the chocolate chip cookies. We then make the sandwich by hand, filling it with any regular scoop of your choice. Served on our pedestal dish. This thing is HUGE! **7.00**



TOPLESS IN PUBLIC A dream for the ice cream purist. Your choice of eight scoops of ice cream stacked in a 1930's triplet ice cream dish. Easily shared by two, but clearly you won't want to. **VG 9.00**



SALTED SUNDAE A very small sundae that breaks the mold for sundaes. One scoops of deep dark chocolate ice cream drizzled with olive oil and dusted with sea salt. Savory, sweet and salty. **VNG 4.00**



TINY TREATS

SELF CONTROL SUNDAE Enough to satisfy. A nano sized scoop of ice cream with toppings in a tiny sundae dish. (Suggestions: hot ganache, butter caramel, strawberry, pineapple) **VNG 4.25**

JR. SUNDAE Many of our sundes can be made in a smaller size upon request. **VNG 5.50**

NANO CONE A tiny ice cream cone. **V 1.25**

NANO CONE SAMPLER A flight of three, five or ten nano cones of your choice served to your table in a special stand. **VN** Three 3.75
Five 6.25
Ten 11.00

NANO FLOAT A tiny glass of one of our sodas with a nano scoop of vanilla ice cream in it. **G 4.25**



A La Carte Menu

Get what you love seperately

BROWNIE	2.00
COOKIE	1.00
BANANA	0.50
2 SLICES TOASTED POUNDCAKE	1.50
BAG OF POTATO CHIPS	0.50
PRETZEL STICK	0.25



SCOOPS IN CUPS OR CONES

Nano 1.25 • One Scoop 2.80
Two Scoops 4.25 • Three Scoops 5.50
Four Scoops 6.80.
Cups come with a complimentary dry topping.

Don't see what you want?

We are only limited by your imagination.

Top it off!

DRY TOPPINGS50 each
M&Ms	Crushed Pretzels
Malt Powder	Toasted Coconut
Reese's Pieces	Chocolate Cookie Crunch
Toffee Bits	Chocolate Sprinkles
Gummi Bears	Rainbow Sprinkles
White Sprinkles	Neon Dinosaur Sprinkles
Crushed Oreos	Honey Roasted Pecans
Pink Hearts	Chocolate Chips
Salted Peanuts	Candied Ginger
Walnuts	Honey Roasted Chipotle
Sliced Almonds	Pecans

HOT TOPPINGS80 each
Butter Caramel	Chocolate Ganache
Vegan Ganache	Vegan Butter Caramel

SAUCES80 each
Coffee	Peach
Marshmallow	Peanut Butter
Blueberry	Orange Marmalade
Pineapple	Wet Walnuts
Strawberry	(Walnuts marinated in 100% pure maple syrup)
Raspberry	

SYRUPS80 each	
Vanilla	Chocolate	Spicy Chocolate
Ginger	Strawberry	Pineapple
Peach	Raspberry	RC Cola
Cherry	Hazelnut	Toasted Marshmallow
Banana	Blueberry	Orange Marmalade
	Blackberry	

SUGAR FREE SYRUPS80 each	
Peach	Strawberry	Chocolate
Vanilla	Raspberry	

WHIPPED CREAM80 each	
Vanilla	Strawberry	Vegan Vanilla
Chocolate	NSA Vanilla	

Take Home a Pint of our Ice Cream for you and your friends.

Our ice cream is available in pints in our grab and go freezer, or our jerks can pack a pint for you as you wait. Why not have our ice cream in your freezer for whenever you want?

Fan Photo by b_mc



V - Can be adapted to vegan • **N** - Can be adapted to no sugar added • **G** - Gluten Free

KNOW WHAT YOU EAT AT LOFTY PURSUITS

NSA - No Sugar Added

Look for the **N** in this menu to find items we can easily adapt to your dietary needs.

We stock two flavors of NSA ice cream at a time, please check our flavor board to see our current selection. All NSA flavors are sweetened with zero calorie sweeteners. All values are based off a Jr. Scoop. A nano scoop is half of these values and a regular scoop is twice these values.

SUGAR-FREE SYRUPS: Peach, Vanilla, Strawberry, Raspberry, sugar-free U-bet Chocolate. We also have an unflavored sugar free sweetener we can use in Rickeys and Ades. All of these syrups have 0g sugar. Sweetened with sucralose and erythritol.

We also have sugar-free whipped cream.

TOPPINGS: Our dry roasted nuts, the ones that are not candied, are served by the tablespoon.

Look for the **N** next to items we can customize easily for you.

Lactose-Free and Vegan

Most of our creations can be adapted to meet a lactose free or vegan diet, the ones we can do most easily are marked with a **V** throughout this menu. We try and stock 6 flavors of almond milk-based vegan ice cream, and four flavors of fruit sorbet (also vegan) at all times. Check our menu board for our current Vegan selection and look in our front display for our sorbets. We also make a vegan whipped cream. Our cherries are not only vegan, but naturally flavored and dyed with fruit juices. Look for the **V** next to items we can customize easily for you.



VEGAN ICE KREMES (IK): Lactose-free and Vegan. We make these flavors ourselves using our unique recipe that is oh, so good. We typically stock six of these flavors at a time. Look at our menu board to see what we have right now. While our vegan ice kremes are almond milk-based, they do contain a very small amount of soy-derived stabilizer.



SORBETS: All of our sorbets are Vegan. We typically have four of these to choose from.

VEGAN GANACHE We specially prepare ganache from dark Belgian chocolate using almond milk and a vegetable fat for thickening. No dairy.

VEGAN BUTTER CARAMEL We have a lactose free/vegan version of our butter caramel.

SYRUPS: All of our cold syrups and our hand made fruit toppings are vegan except our regular ganache, and our butter caramel hot sauces. (Even our marshmallow topping is vegan.)

SODAS: Our orange cream soda, RC Cola, and most of our hand made sodas are vegan. Our root beer contains honey.

ICE CREAM CONES: All are vegan and lactose free. Our cake cones contain honey.

WHAT TO AVOID: Avoid our non-vegan hot butter caramel, our non-vegan ganache, our regular whipped creams and any true ice cream. Remember while Sorbet is vegan and lactose-free, Sherbet has milk in it. Vegans should also avoid any of our sprinkles, any chocolate dry toppings, except oreos and our malt powders.

THE SODA JERK HALL OF FAME



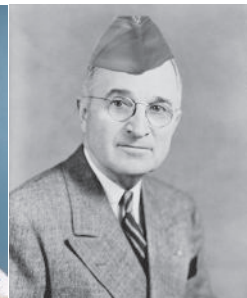
BOB DOLE
Dawson's Drug Store,
Russell, KS



MALCOM X
Townsend Drug Store,
Boston, MA



LUCILLE BALL
Wallgreens,
Jamestown, NY



HARRY TRUMAN
Clinton's Drug Store,
Independence, MO



GENE KELLY
Rymer's Candy Store,
Pittsburgh, PA



BOB HOPE
Standard Drug Store,
Cleveland, OH

Let Lofty Pursuits help you with your next party or gathering.

Have your next party at Lofty Pursuits in our Party Room.

The Lofty Pursuits Event Room is perfect for your private party. We will help make your party or gathering fun, easy and memorable. We can do it all, from ice cream, food and entertainment to gift bags and party favors. Our staff is the best around, and we can customize our events to fit your plans.

See how fun and easy it is to have your party at Lofty Pursuits.

Ice Cream

Every party needs ice cream. We serve everything in your choice of glass, plastic or paper. We have many different options depending on what you want to serve.

Food

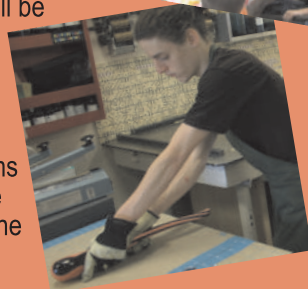
If you want to serve food, feel free to bring your own, Just remember, we are an ice cream store. We do not have forks or plates for you to use.

Entertainment

Making sundaes for everyone is great entertainment for a party, but if it's not enough, we have other choices for you to enjoy. Want to do entertainment yourself? It's not a problem, please just let us know what you will be doing.

COO COO THE CLOWN.

One hour show of magic and fun. One of the best clowns in the country, Randy Yarborough performs over 500 shows a year. He will give you a party you will remember for the rest of your life.



YO-YO PARTY

Our expert yo-yo professionals will make your party a memorable experience. They can provide a variety of entertainment, from presenting a yo-yo show to teaching yo-yoing for a hands-on experience.

FACE PAINTING PARTY

The extraordinary artists of FairyDust Faces will transform your guests into whatever they can imagine from superheroes to animals. Timed to start after your guests arrive and finish in time for you to enjoy ice cream and presents! Everyone gets made up and the party starts.

LOLLIPOP CREATION PARTY

Candy making is hot work, but your party can enjoy some hands-on work safely. Everyone gets a lollipop mold and bits of candy to decorate it with. A candy maker will then fill the mold with molten candy, turning your creation into a treat. Everyone goes home with the three lollipops they helped make. Your party bags and your entertainment all in one.

CANDY-MAKING PARTY

Our candy maker will entertain your party and make a batch of custom candy. It takes one hour and everyone takes home candy. Your party bags and your entertainment all in one.

STORY PARTY

Shelly the Story Telling Lady is a master of story telling, ideal for the 2-year-old to 7-year-old set. Using finger puppets, her amazing tales and her guitar, she will mesmerize your kids with her wit and wonder. Shelly also offers craft projects for the kids. (For the youngest kids, she offers parent-child projects.)

FIND OUT MORE!

See our flyer on our parties, check out www.LoftyPursuits.com or just ask any of our friendly Soda Jerks for more information. We make parties easy and fun for everyone!



Fun things on display at Lofty Pursuits.

There is a lot of history on display at Lofty Pursuits. Look around at our vintage toys. We have a yo-yo museum and a collection of vintage yo-yo award patches and trophies.

You can also find our original Frisbie pie tin. This returnable pie tin is what was tossed around and later became the throwing disc we all know.

Also make sure you look at our display of Victorian candy making machines and molds.

Check out the Haiku vending machine, poetry for a quarter.

Also check out our non-pay phone. It's an original 1920's payphone that has been rewired to play recordings and let kids experience a rotary phone. There are recordings for all sorts of famous phone numbers. Try calling Jenny, James Bond or Alfred Hitchcock.

Dial H-E-L-P on the payphone for more information.



MAKING HARD CANDY AT LOFTY PURSUITS

Lofty Pursuits candy is hand made using equipment that is well over 100 years old.

There was a time candy like this could be found in almost every town in the country. Now there are lessy

than a half dozen places nationwide that have candy masters that can make candy like this.

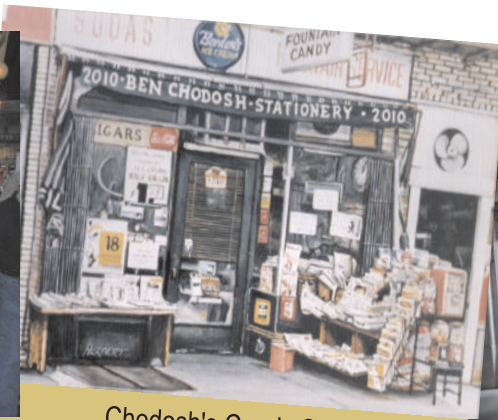
Because we hand make the candy, we use no fillers. This makes our candy taste better.

Try a piece, it's a smile you can bring home.

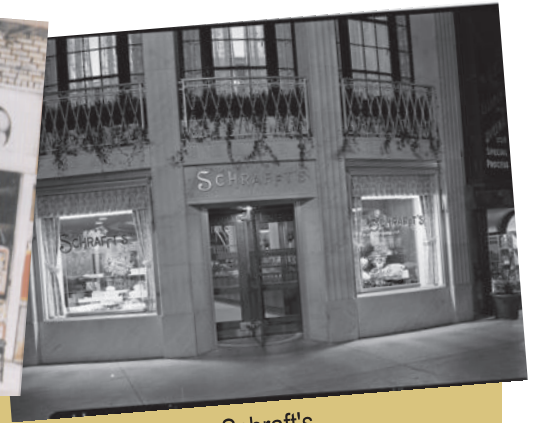




Jahn's Ice Cream



Chodosh's Candy Store



Schraft's

What is a soda fountain and why did you open one in Lofty Pursuits?

I get this question every day. Lofty Pursuits has always been an extension of my childhood, which I think was a very good one. I grew up in Brooklyn, New York and I spent my days biking my neighborhood, going to the corner soda fountain, reading books, playing with my friends. One of the centers of life for the kids where I grew up was Ben Chodosh's Candy Store. For some reason fountains in NYC were called candy stores, and unlike most parts of the country they were not typically in drug stores, but were stand-alone stores. They sold ice cream, sodas, newspapers, magazines and other useful things that were near to home. They were the convenience stores of their day and often sold milk and eggs. Chodosh opened his store in 1947 and kept it open through the 1980s. My grandfather would go there every day to shoot the breeze about world affairs, and I would go there for comic books and an egg cream.

There were other fountains around too. Jahn's was the home to the legendary Kitchen Sink I have tried to do justice to in my menu. Schraft's was the place that you went for very special occasions. All three of these places are now gone, but their memories made up a lot of the joy of my childhood. I hope through Lofty Pursuits I can help you and your kids have happy memories like the ones I had growing up.

-Gregory Cohen



Have Lofty Pursuits cater your next gathering.

Bring an American soda fountain to your event. Our short school bus is a soda fountain on wheels for your outdoor event. Our portable soda fountain was made around 1950, and has been modified for both indoor and outdoor events. Bring the unique experience of a soda fountain to your celebration.

The Scoop Coupe is our converted short school bus.oor events and serves eight flavors of ice cream, multiple flavors of floats, and can make almost anything we can in the store.

We bring the Lofty Pursuits soda fountain to you. It is a real 1950's soda fountain. Our portable soda fountain is small enough to fit through normal doors, but is big enough to bring our amazing treats to your party. It can hold four flavors of ice cream with root beer and seltzer flowing from its taps. It even works without power so it's great for weddings, pool parties and any indoor event.

With either the cart or the bus we can make Ice Cream Sodas, Root Beer Floats, Cups, Cones, Sundaes, Rickys, Phosphates and Affogattos. We can tailor what we serve to your needs and themes, we can even make custom flavors of ice cream just for your event. We are limited only by your imagination.

We even have a table-top root beer float rig to serve ice cream and our treats where nothing else will fit. Please ask a Jerk for information about how to book us for your next event.



FAVORITES FROM OUR JERKS



HOT GANACHE SUNDAE

Our version of the classic hot fudge sundae. We use our own ganache instead of fudge.

5.50 • 7.70



BROOKLYN EGG CREAM

An Egg Cream has no egg in it and no cream. Just chocolate syrup, milk and seltzer.

3.85



ROOT BEER FLOAT/BROWN COW

Sprecher Root Beer with a scoop of vanilla ice cream.

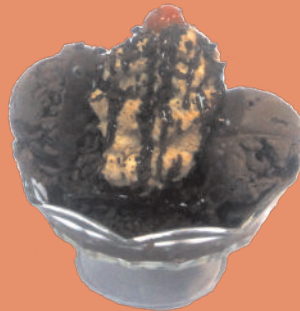
6.00



SANDY SUNDAE

Sweet cream ice cream covered with our hot butter caramel, crushed short bread cookies and a pinch of salt, whipped cream and a cherry.

5.50 • 7.70



DEEP DARK CHOCOLATE BROWNIE DREAMS

A hot brownie, covered in ganache, with our deep dark chocolate ice cream, and chocolate whipped cream with chocolate chips and a cherry.

13.00



THE GREEN RIVER

We float a scoop of lime sherbet over a handmade lemon soda.

7.25



Large

Regular

Junior

Nano

TOASTED MARSHMALLOW MILK SHAKE Toasted marshmallow milk shake, topped with vanilla whipped cream and a freshly toasted marshmallow. 8.00



ICE CREAM SODAS

A scoop of ice cream on a hand made french soda. Try a Black and White (chocolate and vanilla), a strawberry or a vanilla ice cream soda.

6.00